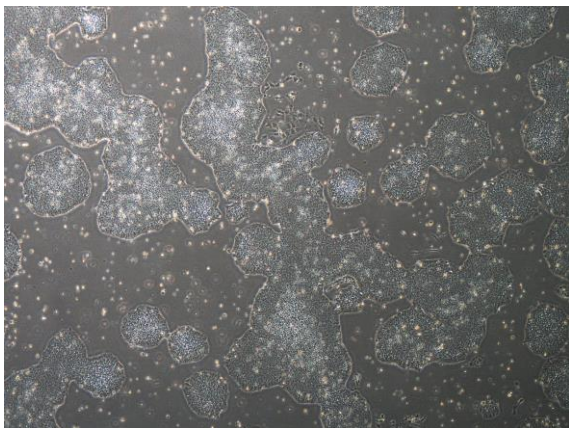
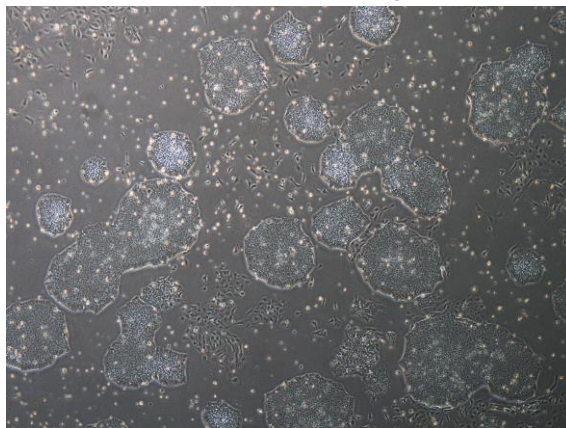


【 CiRA-j-1260 】 Morphology of iPSC colonies

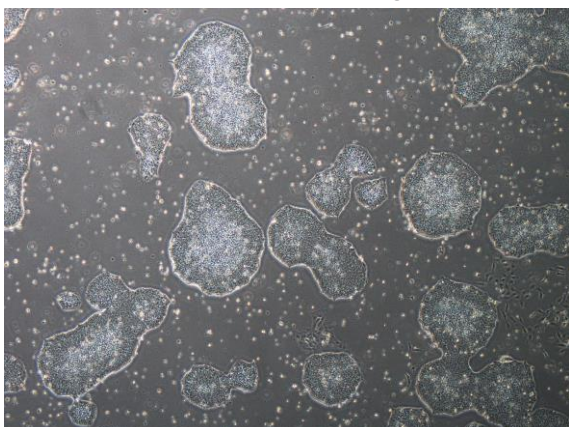
CiRA-j-1260-A: passage-3



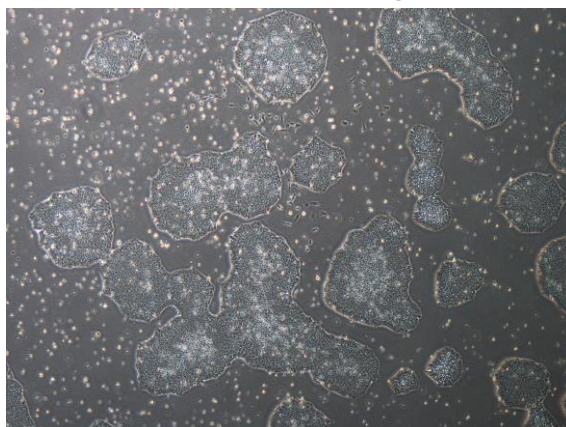
CiRA-j-1260-B: passage-3



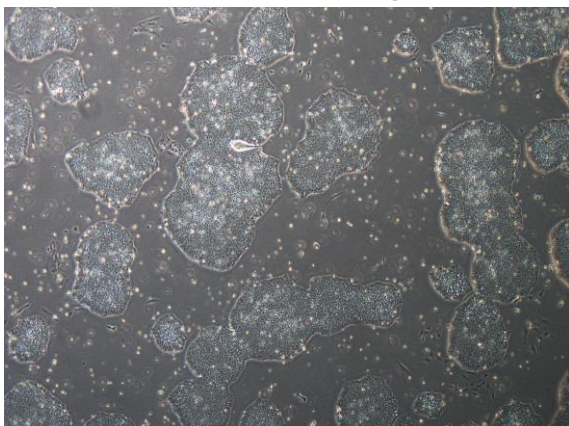
CiRA-j-1260-C: passage-3



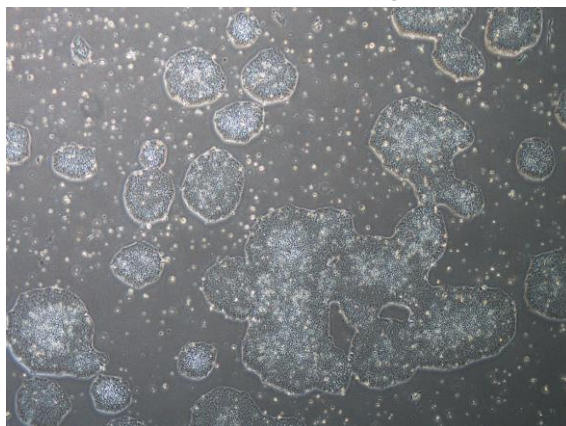
CiRA-j-1260-D: passage-3



CiRA-j-1260-E: passage-3



CiRA-j-1260-F: passage-3



(All images were captured at 4x magnification)